

Technical Service Bulletin

Date: 9/29/2003

Product Description: BMK 12, 13, 15, 16 & 17 Bypass Systems

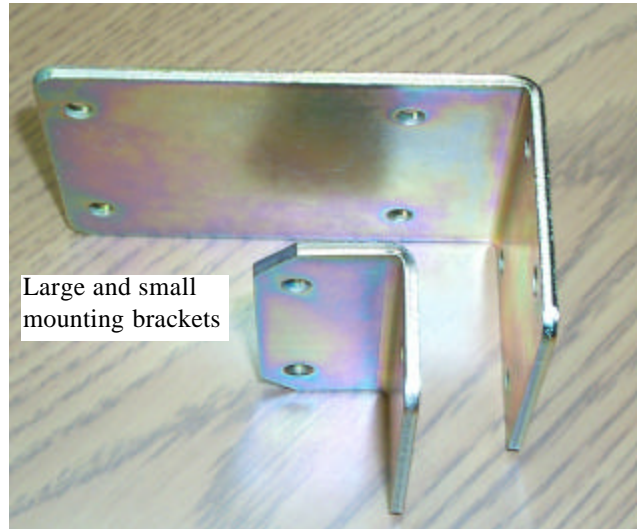
Subject: Mounting bracket installation procedures (BP194 & BP195)

DESCRIPTION

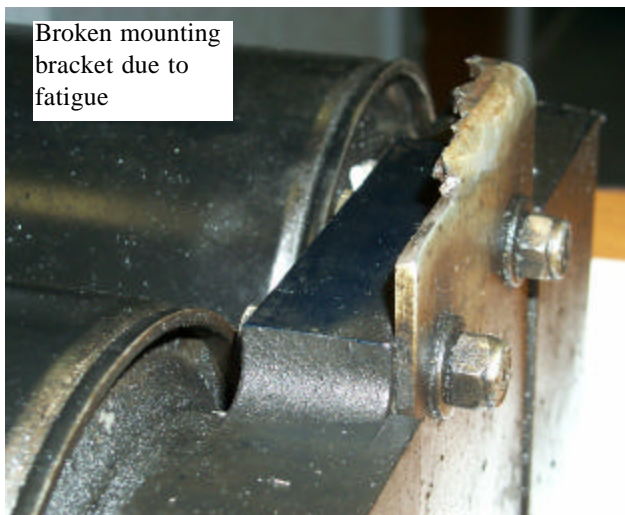
When installing a BMK 12, 13, 15, 16 or 17 filtration kit, it is important to use both included mounting brackets (BP194 & BP195). The brackets work together to provide the support necessary to retain the mount in the worst conditions. Installation of only the larger bracket will result in a critical situation.

The larger bracket is not designed to carry the full weight of the mount. If used alone, the bracket will fatigue over time and eventually break. Only when both brackets are used together will adequate support be provided.

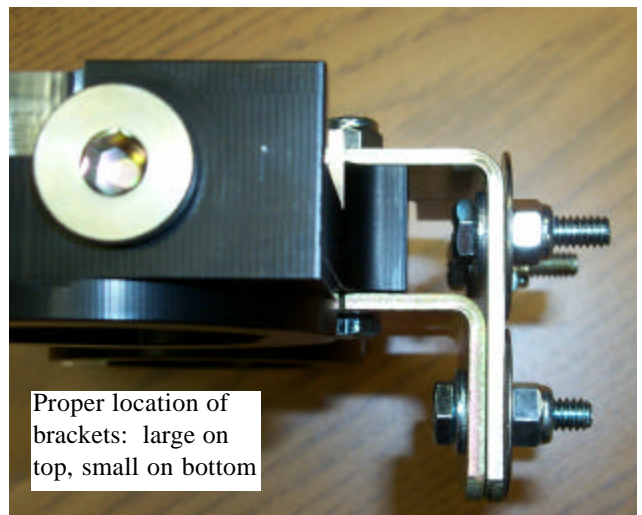
If aware of an application in which both brackets are not installed, AMSOIL recommends installing the second bracket as soon as possible. Because this is a matter of improper installation and not of material or workmanship, failures of this nature will not be provided warranty consideration.



Large and small mounting brackets



Broken mounting bracket due to fatigue



Proper location of brackets: large on top, small on bottom

Submitted By: DRA

Approved By: DRA

Approval Date: 9/30/03

Distribution: Internal All